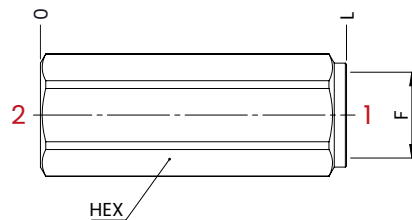
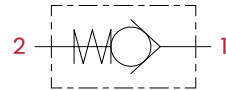


## CHECK VALVES

The UFC poppet check valves allow the full flow of oil in one direction and stop the flow in the opposite direction. The applications where these valves can be used are many, agricultural machinery or industrial installations.

### HYDRAULIC CIRCUIT



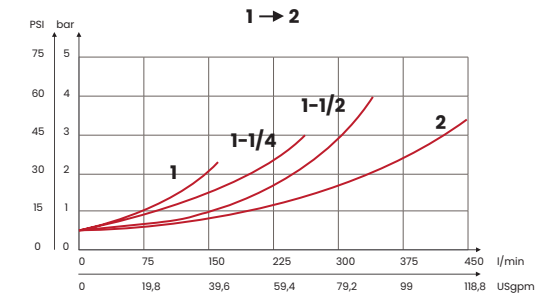
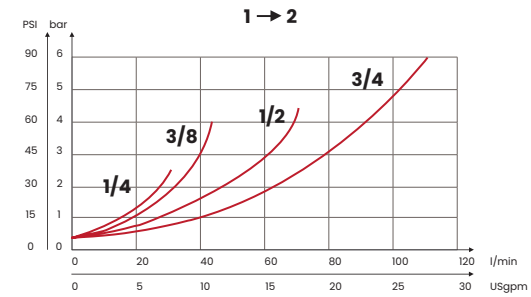
### TECHNICAL CHARACTERISTICS

F	L	HEX
1/4 NPTF	58 [2,28]	19
3/8 NPTF	69 [2,71]	22
1/2 NPTF	75 [2,95]	27
3/4 NPTF	88,5 [3,48]	35
1 NPTF	110 [4,33]	41
1-1/4 NPTF	120 [4,72]	55
1-1/2 NPTF	138 [5,43]	60
2 NPTF		70

On request  
• Calibration hole

mm [Inches]

### PERFORMANCES



### ORDERING CODE

CODE	TYPE	F ports	MAX FLOW l/min [USgpm]	MAX PRESSURE bar [PSI]	SPRING bar [PSI]	WEIGHT kg [lb]
FA3049	UFC1N05	1/4 NPTF	30 [7,92]	400 [5800]	0,5 Standard [7,3]	0,10 [0,22]
FA3050	UFC2N05	3/8 NPTF	45 [12]			0,18 [0,40]
FA3051	UFC3N05	1/2 NPTF	70 [18,5]			0,23 [0,50]
FA3052	UFC4N05	3/4 NPTF	110 [28,9]			0,45 [1]
FA3053	UFC5N05	1 NPTF	160 [42,1]	350 [5075]	On request 3 [43,5] 4,5 [65] 6 [87]	0,73 [1,6]
FA3054	UFC6N05	1-1/4 NPTF	250 [66]		1,5 [3,3]	
FA3055	UFC7N05	1-1/2 NPTF	350 [92,5]		1,85 [4,07]	
FA3056	UFC8N05	2 NPTF	430 [113,5]		3 [6,6]	

UPDATE: July 2023 (v.04)