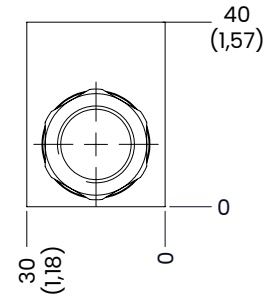
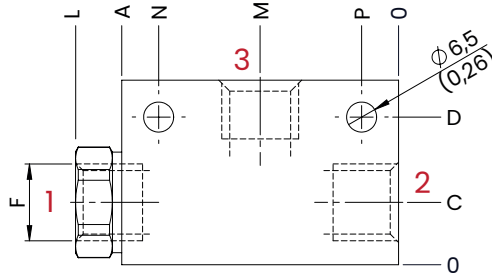
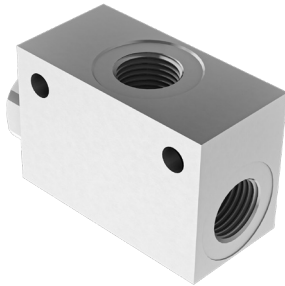


## SHUTTLE VALVES

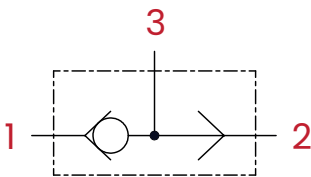


### TECHNICAL CHARACTERISTICS

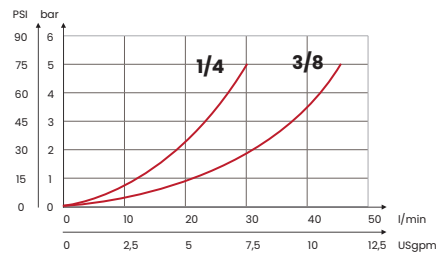
mm [inches]

F	L	A	C	D	P	M	N
1/4 BSPP	57 [2,24]	52 [2,04]	12 [0,47]	29,5 [1,16]	9 [0,35]	24,5 [0,96]	43 [1,69]
3/8 BSPP	70 [2,76]	60 [2,36]	13,5 [0,53]	32 [1,26]	8 [0,31]	30 [1,18]	52 [2,05]

### HYDRAULIC CIRCUIT



### PERFORMANCES



### ORDERING CODE

ORDERING CODE	F ports	MAX FLOW l/min [USgpm]	MAX PRESSURE bar [PSI]	WEIGHT kg [lb]
VSS1B	1/4 BSPP	30 [7,9]	350 [5075]	0,29 [0,65]
VSS2B	3/8 BSPP	45 [12]		0,37 [0,81]

Mineral oil: DIN 51524 ISO 6743/4 | Oil viscosity: 15 to 250 cSt 15-250 mm<sup>2</sup>/s | Oil temperature: -4°F + 176°F -20°C +80°C | Ambient temperature: -4°F + 122°F -20°C +50°C | Max contamination index with filter: 5 to 250 cSt 15-250 mm<sup>2</sup>/s | It is necessary a filter use to protect the valve (advised filtration 15 µm)

UPDATE: October 2022 (v.04)