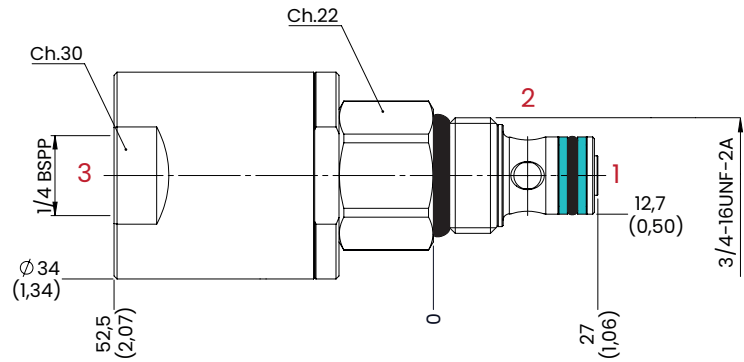


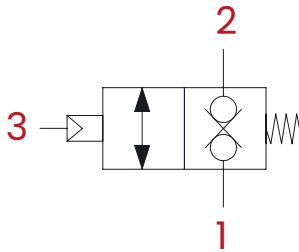
VP2 SAE 8/2 - 18 l/min - 350 bar

PNEUMATICALLY OPERATED VALVES

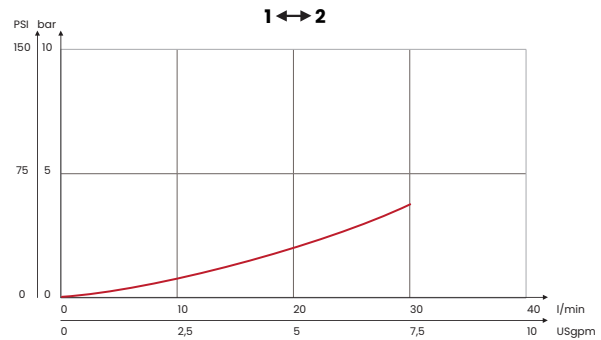


mm
[Inches]

HYDRAULIC CIRCUIT



PERFORMANCES



ORDERING CODE

ORDERING CODE	CAVITY	MAX FLOW l/min [USgpm]	MAX PRESSURE bar [PSI]	TIGHTENING TORQUE Nm [lbt ft]	PILOT PRESSURE bar [PSI]	WEIGHT kg [lbt]
VP2	SAE8/2	30 [7,9]	350 [5075]	30 [22]	4/15 [58/218]	0,16 [0,35]

Mineral oil: DIN 51524 ISO 6743/4 | Oil viscosity: 15 to 250 cSt 15-250 mm²/s | Oil temperature: -4°F + 176°F -20°C +80°C | Ambient temperature: -4°F + 122°F -20°C +50°C | Max contamination index with filter: 5 to 250 cSt 15-250 mm²/s | It is necessary a filter use to protect the valve (advised filtration 15 µm) | Max leakage: 0,25 cm³/min - 5 drops/min at 80% of the calibration pressure

UPDATE: August 2022 (v.03)