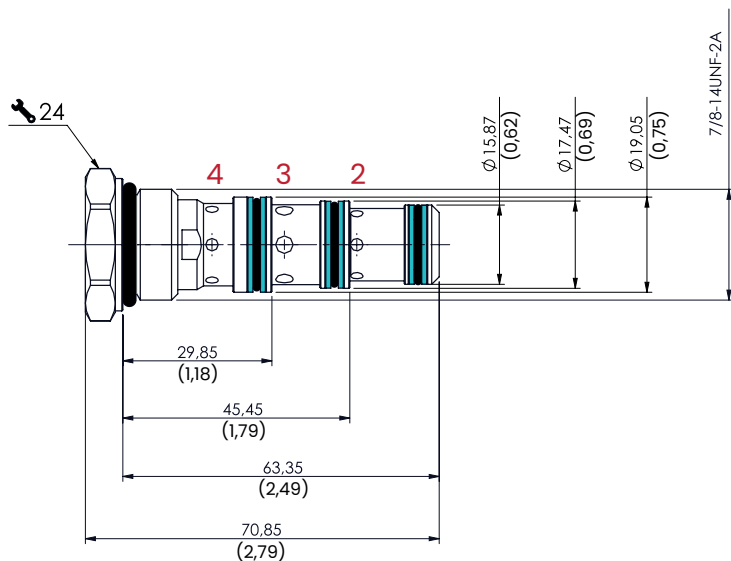


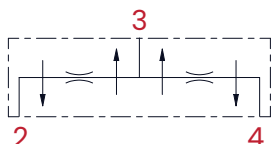
VDF3 SAE 10/4 - 40 l/min - 350 bar

FLOW DIVIDERS

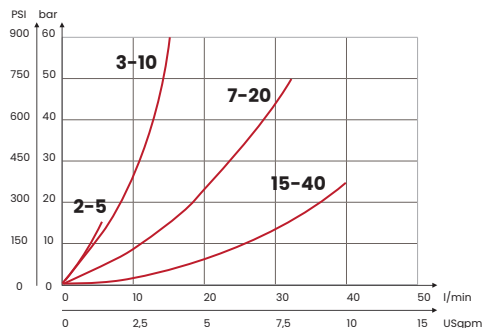


mm
[Inches]

HYDRAULIC CIRCUIT



PERFORMANCES



ORDERING CODE

ORDERING CODE	CAVITY	INLET FLOW RANGE l/min [USgpm]	MAX FLOW l/min [USgpm]	MAX PRESSURE bar [PSI]	TIGHTENING TORQUE Nm [lbt ft]	WEIGHT kg [lbt]
VDF3S1	SAE 10/4	2-5 [0,5-1,3]	40 [10,6]	350 [5075]	35 [26]	0,12 [0,26]
VDF3S2		3-10 [0,8-2,6]				
VDF3S3		7-20 [1,8-5,2]				
VDF3S4		15-40 [3,9-10,4]				
Aluminium body						

Mineral oil: DIN 51524 ISO 6743/4 | Oil viscosity: 15 to 250 cSt 15-250 mm²/s | Oil temperature: -4°F + 176°F -20°C +80°C | Ambient temperature: -4°F + 122°F -20°C +50°C | Max contamination index with filter: 5 to 250 cSt 15-250 mm²/s | It is necessary a filter use to protect the valve (advised filtration 15 µm) | Max leakage: 0,25 cm³/min - 5 drops/min
UPDATE: October 2022 (v.02)