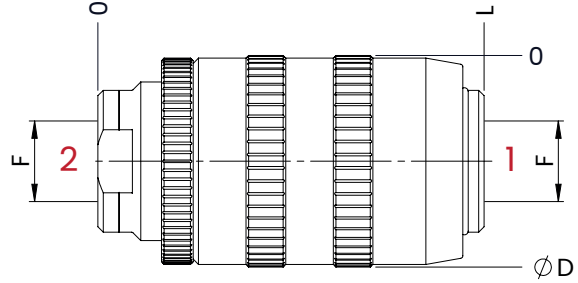


UNIDIRECTIONAL FLOW CONTROL VALVES

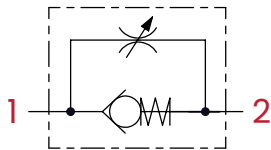


TECHNICAL CHARACTERISTICS

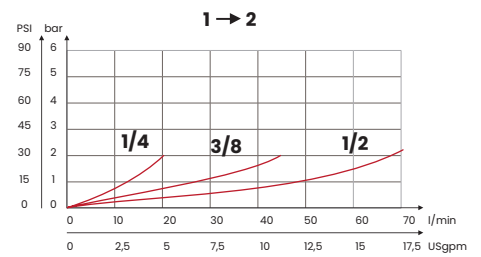
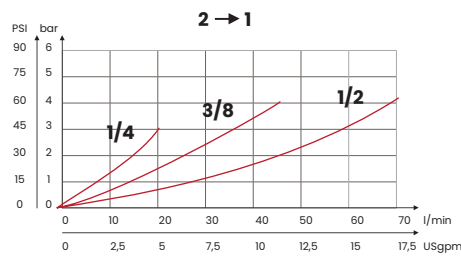
mm [inches]

F	ØD	L
1/4 BSPP	34 [1,34]	62 [2,44]
3/8 BSPP	40 [1,57]	73 [2,87]
1/2 BSPP	45 [1,77]	83 [3,27]

HYDRAULIC CIRCUIT



PERFORMANCES



ORDERING CODE

ORDERING CODE	F ports	MAX FLOW l/min [USgpm]	MAX PRESSURE bar [PSI]	WEIGHT kg [lbt]
VCU1B	1/4 BSPP	20 [5,3]	350 [5075]	0,28 [0,06]
VCU2B	3/8 BSPP	45 [12]		0,45 [1]
VCU3B	1/2 BSPP	70 [18,6]		0,66 [1,45]

Mineral oil: DIN 51524 ISO 6743/4 | Oil viscosity: 15 to 250 cSt 15-250 mm²/s | Oil temperature: -4°F + 176°F -20°C +80°C | Ambient temperature: -4°F + 122°F -20°C +50°C | Max contamination index with filter: 5 to 250 cSt 15-250 mm²/s | It is necessary a filter use to protect the valve (advised filtration 15 µm)

UPDATE: October 2022 (v.04)