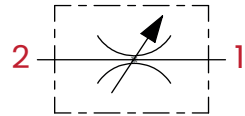
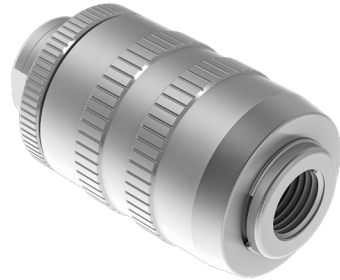


BIDIRECTIONAL FLOW CONTROL VALVES

The bidirectional flow control valves VCB (Gas thread) regulate the speed of an actuator in both directions

HYDRAULIC CIRCUIT

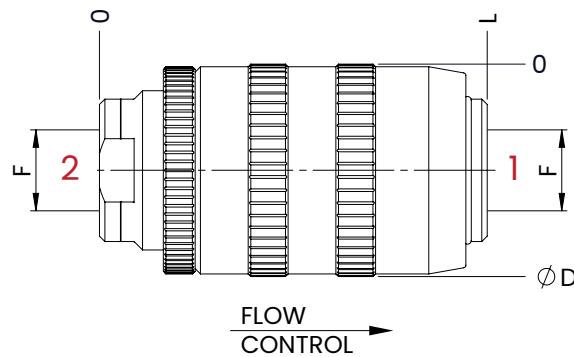
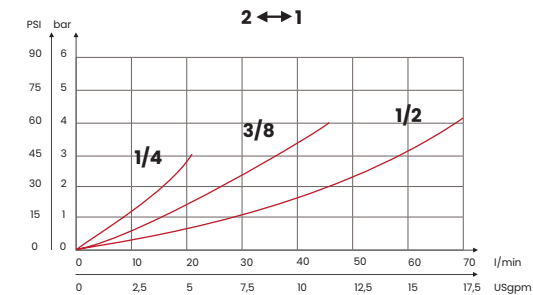


TECHNICAL CHARACTERISTICS

mm [Inches]

F	ØD	L
1/4 BSPP	34 [1,34]	62 [2,44]
3/8 BSPP	40 [1,57]	73 [2,87]
1/2 BSPP	45 [1,77]	83 [3,27]
Steel body		

PERFORMANCES



mm [Inches]

ORDERING CODE

CODE	TYPE	F ports	MAX FLOW l/min [USgpm]	MAX PRESSURE bar [PSI]	WEIGHT kg [lb]
FA4050	VCB1B	1/4 BSPP	20 [5,3]	350 [5075]	0,30 [0,66]
FA4051	VCB2B	3/8 BSPP	45 [12]		0,48 [1,06]
FA4052	VCB3B	1/2 BSPP	70 [18,6]		0,67 [1,47]

UPDATE: March 2023 (v.05)