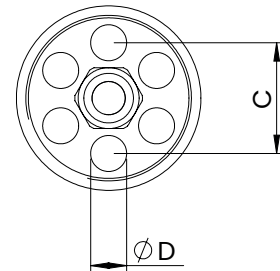
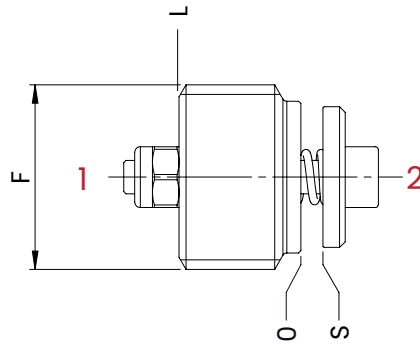
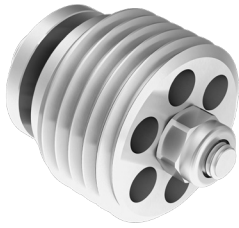


HOSE BURST VALVES

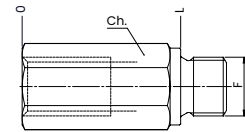
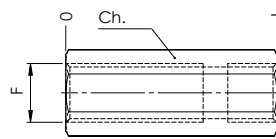


mm
[Inches]

TECHNICAL CHARACTERISTICS

| F | C | D | L |
|----------|-------------|-------------|------------|
| 1/4 BSPP | 8 [0,31] | 2,5 [0,10] | 8,2 [0,32] |
| 3/8 BSPP | 10 [0,39] | 3,25 [0,13] | 11 [0,43] |
| 1/2 BSPP | 11,5 [0,45] | 4 [0,16] | 13 [0,51] |
| 3/4 BSPP | 14,5 [0,57] | 5,2 [0,20] | 18 [0,70] |
| 1 BSPP | 19 [0,75] | 7 [0,28] | 20 [0,79] |

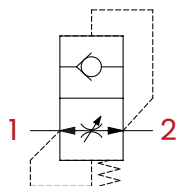
HOUSING



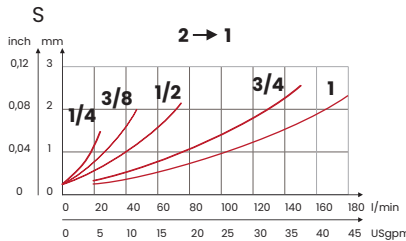
| ORDERING CODE | F ports | L | Ch. |
|---------------|----------|-----------|-----------|
| 33300026 | 1/4 BSPP | 61 [2,40] | 19 [0,75] |
| 33300028 | 3/8 BSPP | 63 [2,48] | 22 [0,87] |

| ORDERING CODE | F ports | L | Ch. |
|---------------|----------|-----------|-----------|
| 33300018 | 1/4 BSPP | 39 [1,53] | 19 [0,75] |
| 33300019 | 3/8 BSPP | 45 [1,77] | 22 [0,87] |

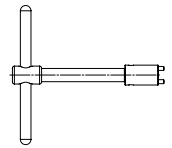
HYDRAULIC CIRCUIT



PERFORMANCES



TOOL



| ORDERING CODE | TYPE | WEIGHT kg [lbt] |
|---------------|-------|--------------------|
| CHI01 | VBA1B | 0,12 [0,27] |
| CHI02 | VBA2B | 0,13 [0,29] |
| CHI03 | VBA3B | 0,15 [0,33] |
| CHI04 | VBA4B | 0,20 [0,44] |

ORDERING CODE

| ORDERING CODE | F | MAX FLOW l/min [USgpm] | MAX PRESSURE bar [PSI] | VALVE TIGHTENING TORQUE Nm [lbt ft] | NUT TIGHTENING TORQUE FOR ADJUSTMENT Nm [lbt ft] | WEIGHT kg [lbt] |
|---------------|----------|---------------------------|---------------------------|---|--|--------------------|
| VBA1B | 1/4 BSPP | 25 [6,6] | 350 [5075] | 4 [3] | 1 [0,7] | 0,008 [0,017] |
| VBA2B | 3/8 BSPP | 50 [13,2] | | 6 [4,5] | | 0,014 [0,030] |
| VBA3B | 1/2 BSPP | 80 [21,1] | | 10 [7,5] | 2 [1,5] | 0,025 [0,055] |
| VBA4B | 3/4 BSPP | 150 [39,6] | | 15 [11] | | 0,05 [0,11] |
| VBA5B | 1 BSPP | 180 [47,5] | | | | 0,10 [0,22] |

Adjustment and hole on the plate on request

Mineral oil: DIN 51524 ISO 6743/4 | Oil viscosity: 15 to 250 cSt 15-250 mm²/s | Oil temperature: -4°F + 176°F -20°C +80°C | Ambient temperature: -4°F + 122°F -20°C +50°C | Max contamination index with filter: 5 to 250 cSt 15-250 mm²/s | It is necessary a filter use to protect the valve (advised filtration 15 µm) | Max leakage in the version without hole: 0,25 cm³/min - 5 drops/min

UPDATE: December 2022 (v.05)