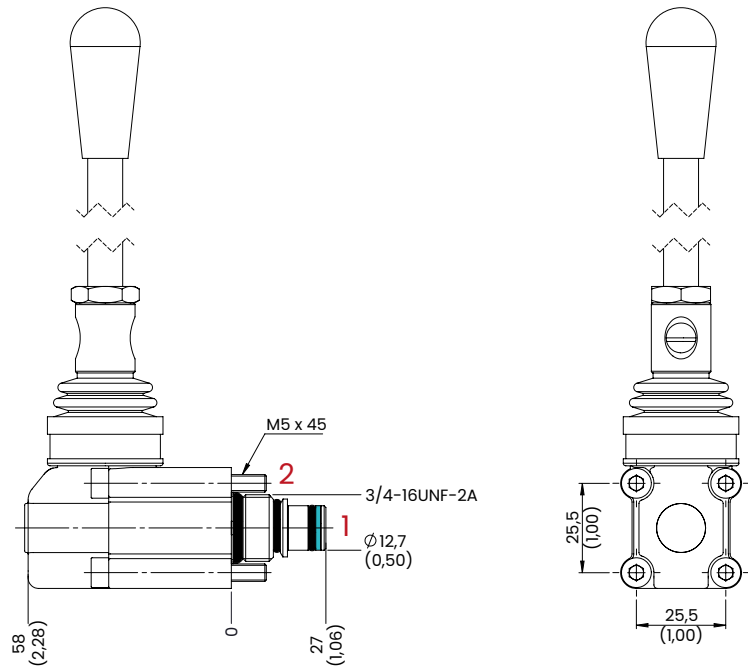
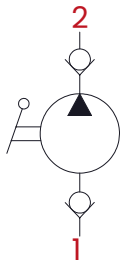


HAND PUMPS



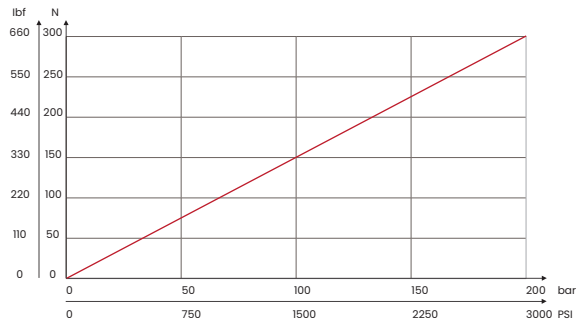
mm
[Inches]

HYDRAULIC CIRCUIT



PERFORMANCES

Effort operating at the end of the lever



ORDERING CODE

ORDERING CODE	CAVITY	DISPLACEMENT cm ³ [in ³]	MAX PRESSURE bar [PSI]	TIGHTENING TORQUE Nm [lbt ft]	WEIGHT kg [lbt]
PM2	SAE8/2	2 [0,12]	200 [2900]	30 [22]	0,46 [1,01]

Mineral oil: DIN 51524 ISO 6743/4 | Oil viscosity: 15 to 250 cSt 15-250 mm²/s | Oil temperature: -4°F + 176°F -20°C +80°C | Ambient temperature: -4°F + 122°F -20°C +50°C | Max contamination index with filter: 5 to 250 cSt 15-250 mm²/s | It is necessary a filter use to protect the valve (advised filtration 15 μ m) | Max leakage: 0,25 cm³/min - 5 drops/min at 80% of the calibration pressure

UPDATE: September 2022 (v.01)