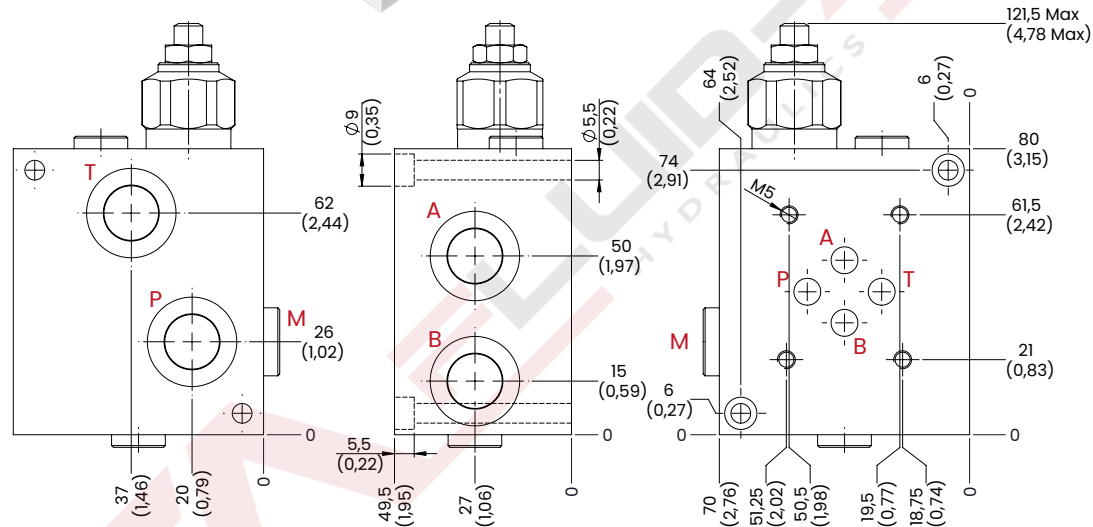
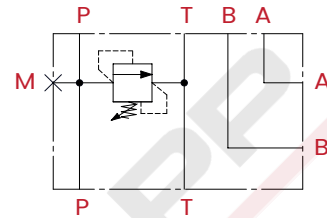


## CETOP 3 SINGLE MANIFOLDS

The MC3 bases allow the assembly of a single CETOP 3 solenoid valve, they are supplied with a relief valve.



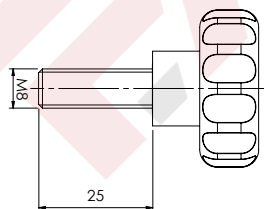
### HYDRAULIC CIRCUIT



### TECHNICAL CHARACTERISTICS

mm [Inches]

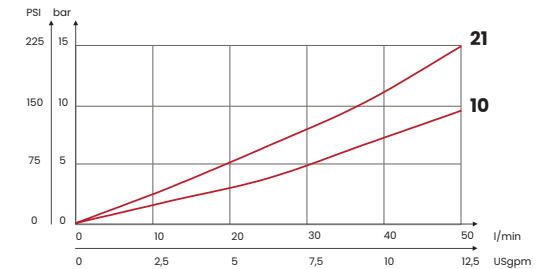
A-B-P-T ports	M ports
3/8 BSPP	1/4 BSPP
Aluminium body	



HANDKNOB CODE

62200012

### PERFORMANCES



### TAMPER PROOF CAP M8



CODE
62200020

### ORDERING CODE

CODE	TYPE	MAX FLOW l/min [USgpm]	MAX PRESSURE bar [PSI]	RANGE SPRING bar [PSI]	INCREASE TO TURN bar [PSI]	WEIGHT kg [lb]
FA6035	MC3C10	50 [13,3]	210 [3045]	10/70 [145/1015]	16,5 [239]	0,8 [1,76]
FA6036	MC3C21			20/210 [290/3045]	33 [479]	

UPDATE: Jan. 2024 (v.07)