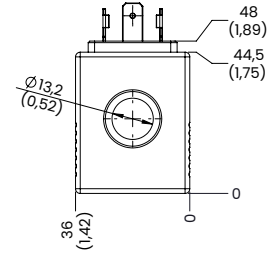
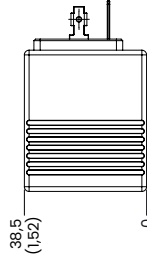
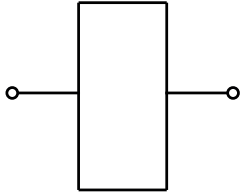


22W COILS



mm
[Inches]

HYDRAULIC CIRCUIT



ELECTRIC

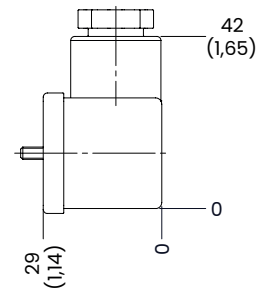
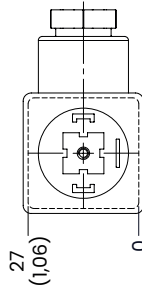
Protection class with std.connector DIN	IP 65
INSULATION INDEX	H
Wire insulation class	H
NOMINAL VOLTAGE	+/- 10%
POWER AT 20C°	22W
ED*	100% with temperature -20 C° + 40 C°
*For temperature or special conditions contact our sales department	

ORDERING CODE

ORDERING CODE	VOLTAGE	RESISTANCE	MATCHING CONNECTOR	ABSORBED POWER	TIGHTENING TORQUE Nm lbt ft	WEIGHT kg lbt
C2212	12Vdc	6,5 Ω	CNS [DIN 43650]	22 W	2 [1,5]	0,21 [0,46]
C2224	24Vdc	26,5 Ω				

CNS CONNECTORS

CONNECTORS



mm
[Inches]

ORDERING CODE

ORDERING CODE	NOMINAL CURRENT	MAX OPERATING CURRENT	CONTACT RESISTANCE	MAX CONDUCTORS CROSS-SECTION	CONTACT HOLDER	GAND SIZE OPTIONS
CNS	10 A	16 A	≤ 4m Ohm	1,5 mm ²	PA (+G)	Pg11
CABLE DIAMETER	PROTECTION CLASS	ISULATION CLASS	SEALING MATERIAL	OPERATING TEMPERATURE	WEIGHT kg lbt	
6-8 mm	IP 65 EN 60529	VDE 0110-1/89	NBR	-40° +90°	0,020 [0,044]	

UPDATE: September 2022 (v.03)