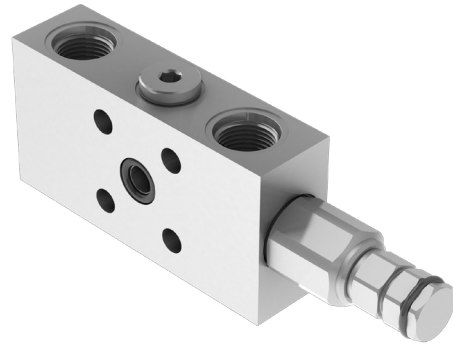
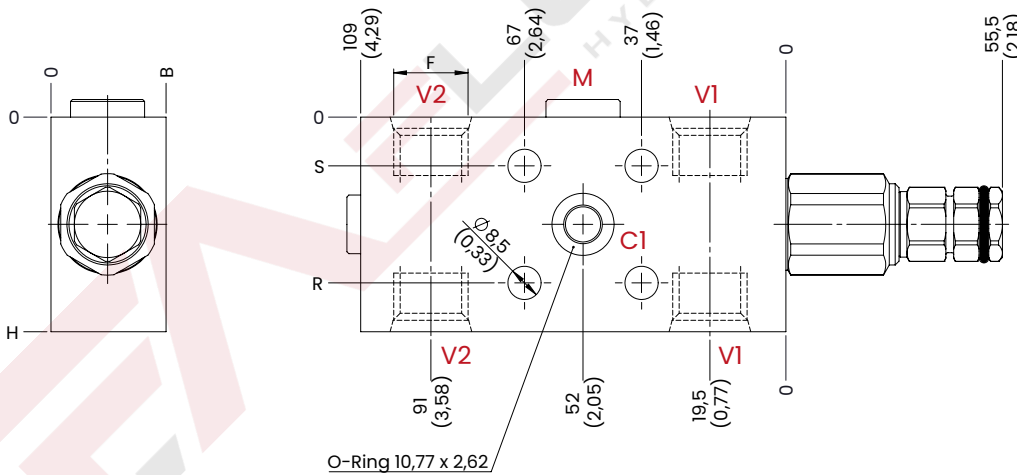
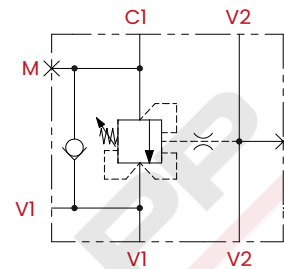


SINGLE COUNTERBALANCE VALVES FOR CLOSED CENTER - SINGLE FLANGED VERSION

The BSL counterbalance valves allow you to keep a load locked, the built-in relief valve protects the system from overpressure in the cylinder by sending the oil to drain.



HYDRAULIC CIRCUIT



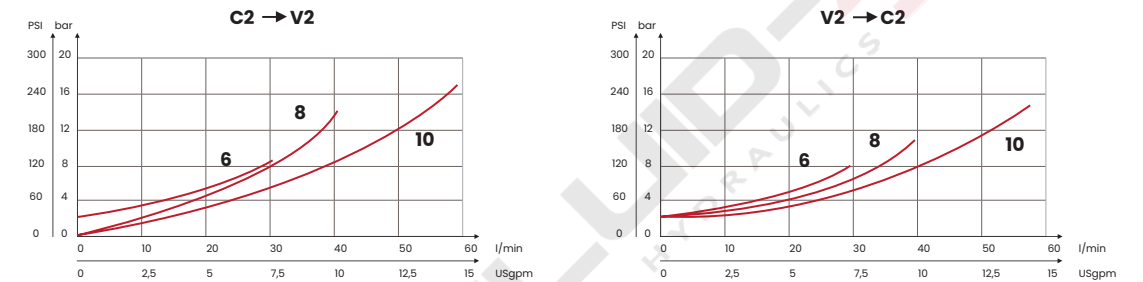
TECHNICAL CHARACTERISTICS

mm [Inches]

F	H	B	R	S
SAE6 [9/16-18 UNF]	55 [2,16]	29,5 [1,16]	12,5 [0,49]	42,5 [1,67]
SAE8 [3/4-16 UNF]				
SAE10 [7/8-16 UNF]	65 [2,56]	34,5 [1,36]	17,5 [0,69]	47,5 [1,87]

Steel body (on request aluminium body)

PERFORMANCES



ORDERING CODE

CODE	TYPE	F ports	MAX FLOW l/min [USgpm]	MAX PRESSURE bar [PSI]	STANDARD SETTING bar [PSI]	RANGE SPRING bar [PSI]	INCREASE TO TURN bar [PSI]	PILOT RATIO	WEIGHT kg [lb]
FA1061	BSL1S21	SAE6	30 [7,9]	350 [5075]	210 [3045]	30/210 [435/3045]	80 [1160]	1:4,25 On request 1:8,1	1,13 [2,48]
FA1062	BSL1S35				350 [5075]	60/350 [870/5075]	135 [1960]		
FA1063	BSL2S21	SAE6	40 [10,6]		210 [3045]	30/210 [435/3045]	80 [1160]		
FA1064	BSL2S35				350 [5075]	60/350 [870/5075]	135 [1960]		
FA1065	BSL3S21	SAE10	60 [15,9]		210 [3045]	30/210 [435/3045]	80 [1160]		
FA1066	BSL3S35				350 [5075]	60/350 [870/5075]	135 [1960]		

Standard setting 350 bar [5075 PSI] to 5 l/m [1,32 USgpm] Standard setting 210 bar [3045 PSI] to 5 l/m [1,32 USgpm]

UPDATE, March 2023 (v.01)