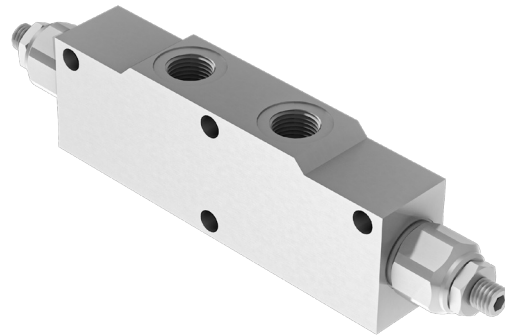


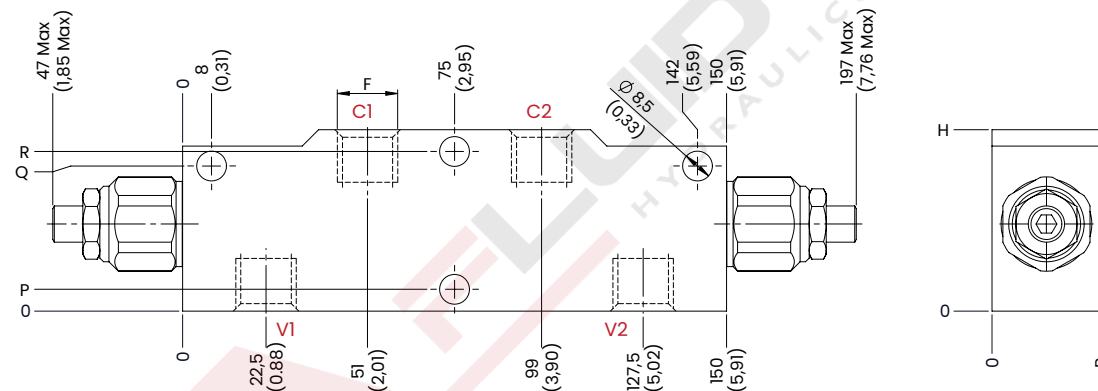
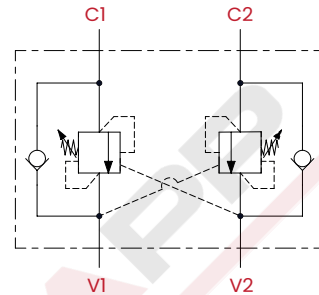
BDAY COUNTERBALANCE BSPP

DOUBLE COUNTERBALANCE VALVES FOR OPEN CENTER

BDAY counterbalance valves (Gas thread) are used to keep a load locked, the built-in relief valve protects the system from overpressure in the cylinder by draining the oil.



HYDRAULIC CIRCUIT

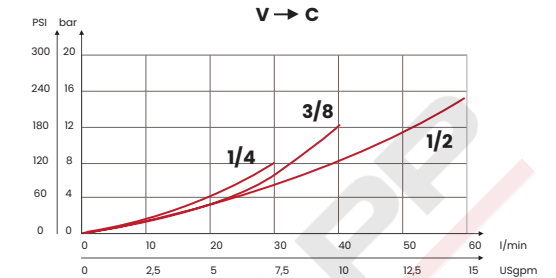
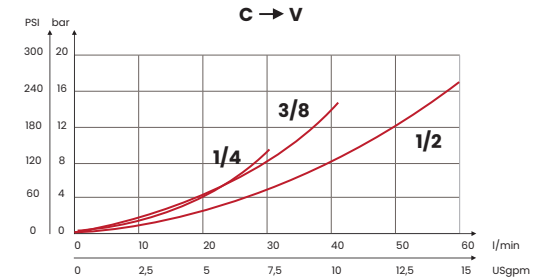


TECHNICAL CHARACTERISTICS

F	B	H	P	Q	R
1/4 BSPP	25 [0,98]	50 [1,97]	5,5 [0,22]	40,5 [1,59]	44,5 [1,75]
3/8 BSPP					
1/2 BSPP	30 [1,18]	60 [2,36]	8,5 [0,33]	46,5 [1,83]	51,5 [1,03]

Steel body

PERFORMANCES



TAMPER PROOF CAP M10



CODE
62200021

ORDERING CODE

CODE	TYPE	F ports	MAX FLOW l/min [USgpm]	MAX PRESSURE bar [PSI]	STANDARD SETTING bar [PSI]	RANGE SPRING bar [PSI]	INCREASE TO TURN bar [PSI]	PILOT RATIO	WEIGHT kg [lb]
FA2011	BDA1B21YA	1/4 BSPP	30 [7,9]	350 [5075]	210 [3045]	30/210 [435/3045]	80 [1160]	1:4,25	1,8 [4]
FA2012	BDA1B35YA				350 [5075]	60/350 [870/5075]	135 [1960]		
FA2013	BDA2B21YA	3/8 BSPP	40 [10,6]		210 [3045]	30/210 [435/3045]	80 [1160]		1,72 [3,8]
FA2014	BDA2B35YA				350 [5075]	60/350 [870/5075]	135 [1960]		
FA2015	BDA3B21YA	1/2 BSPP	60 [15,9]		210 [3045]	30/210 [435/3045]	80 [1160]		2 [4,4]
FA2016	BDA3B35YA				350 [5075]	60/350 [870/5075]	135 [1960]		

Standard setting 350 bar [5075 PSI] to 5 l/m [1,32 USgpm] Standard setting 210 bar [3045 PSI] to 5 l/m [1,32 USgpm]

UPDATE: March 2023 (v.04)